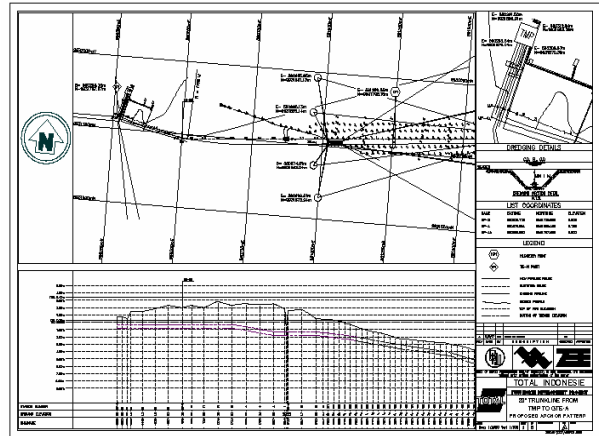
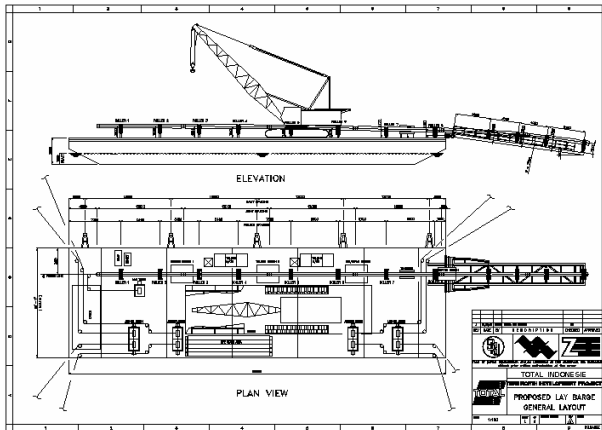


PROJECT:

20" TRUNK LINE, TMP TO GTS-A



OPERATOR:
TOTAL INDONESIE

PROJECT VALUE:
NOT KNOWN

PROJECT DESCRIPTION:

Detail and installation engineering and commissioning of the 20" Trunk Line. The pipeline routing is in swampy area very shallow water.

CLIENT:
ISTANA KARANG LAUT

CONTACT PERSON:
Mr. Mike Clark
Tel: (62-21) 314 6018

ZEE'S SCOPE OF WORK:

- Pipeline detail and installation engineering
- Detail design of the converted lay barge (Flat top barge to pipelay mode)
- Construction and installation supervision

ZEE'S VALUE OF WORK: 250,000.00 US\$